



**GGL** RESOURCES CORP.

**TSX-V:GGL**

# **McConnell**

## **A Gold-Copper Project Near Kemess**

**McConnell Project Presentation**



# Forward Looking Statements

Certain information regarding the Company contained herein may constitute forward-looking statements within the meaning of applicable securities laws. Forward-looking statements may include estimates, plans, expectations, opinions, forecasts, projections, guidance or other statements that are not statements of fact. Although the Company believes that the expectations reflected in such forward-looking statements are reasonable, it can give no assurance that such expectations will prove to have been correct. The Company cautions that actual performance will be affected by a number of factors, many of which are beyond the Company's control, and that future events and results may vary substantially from what the Company currently foresees. Discussion of the various factors that may affect future results is contained in the Company's Annual Report which is available at [www.sedar.com](http://www.sedar.com). The Company's forward-looking statements are expressly qualified in their entirety by this cautionary statement.

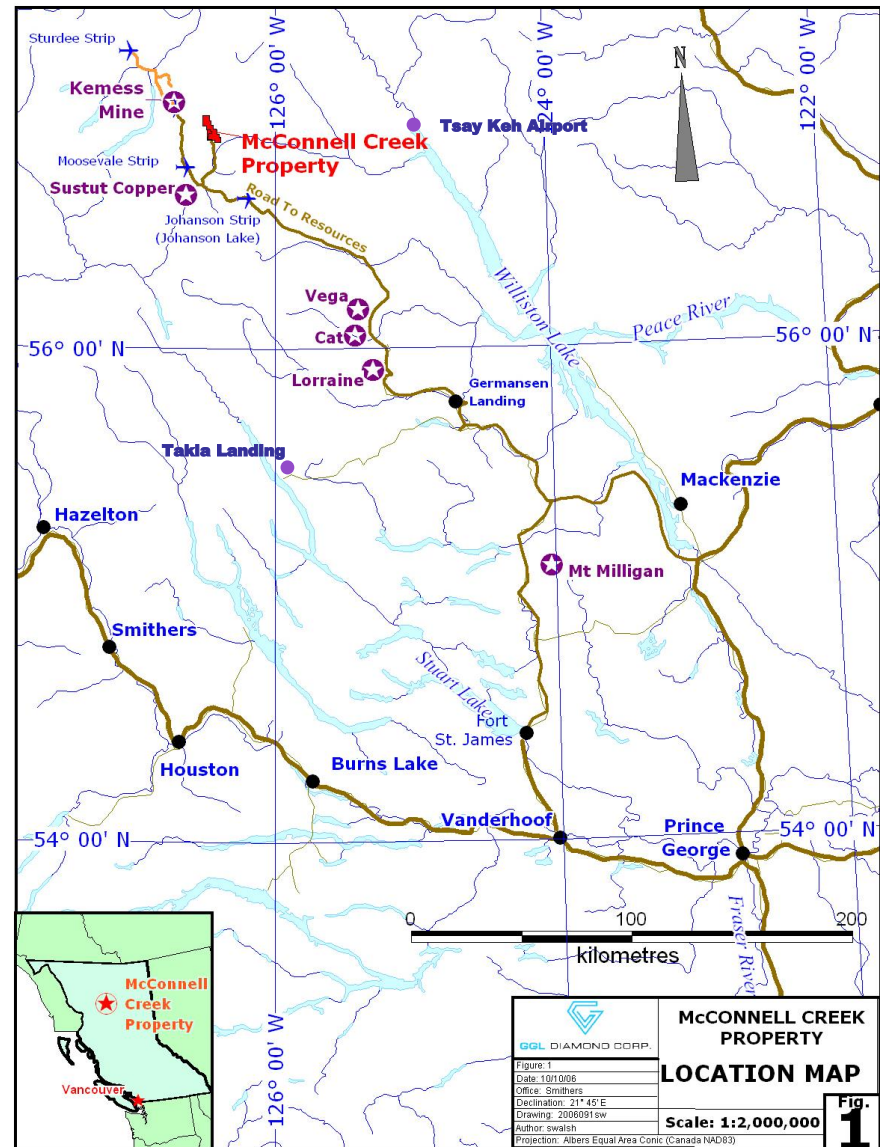
All technical information contained in this presentation has been approved by David Kelsch, P.Geo., President of GGL Resources Corp. and a qualified person for the purposes of National Instrument 43-101.





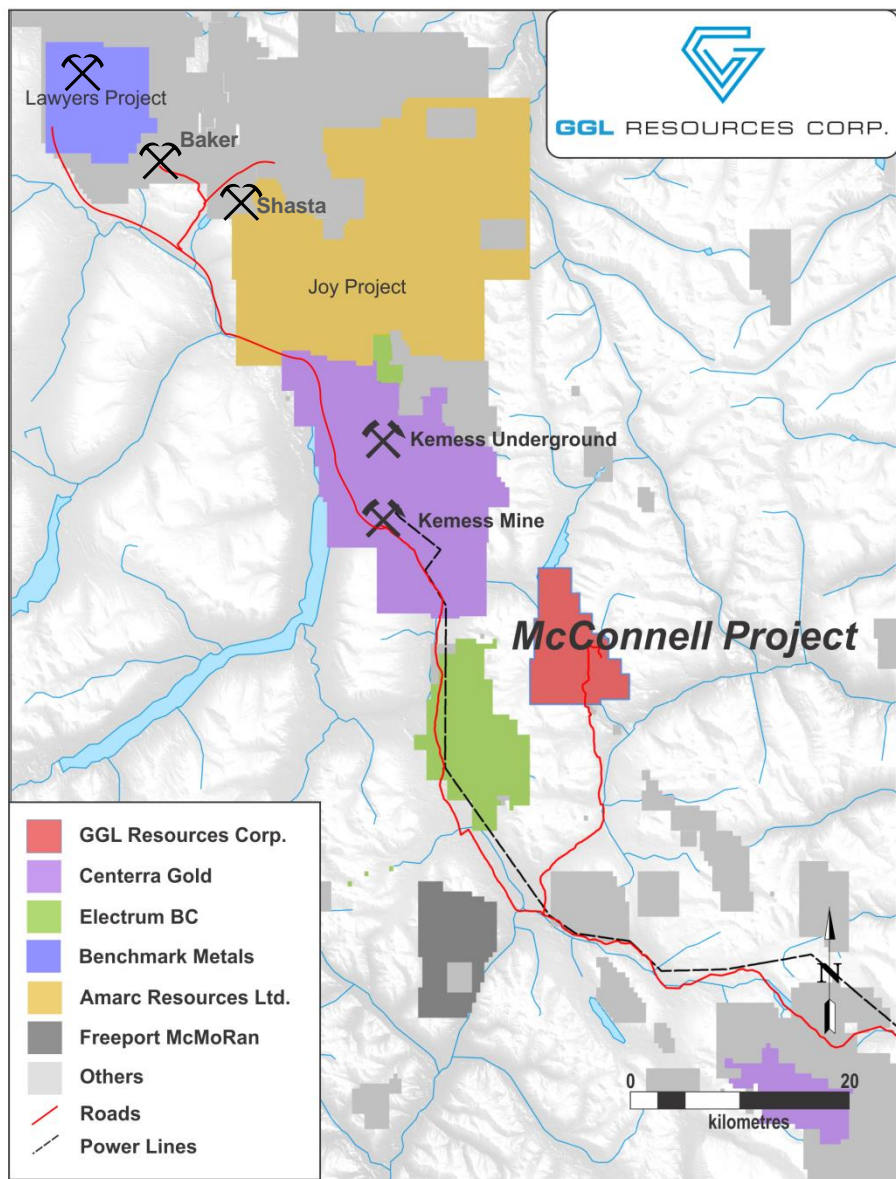
# McConnell Location

- The McConnell property is located in northern BC.
- 400 km NNW Prince George.
- 5 claims covering 8,700 ha.
- Mineral claims are 100% held by GGL Resources Corp.
- Core areas held by GGL since 1981.
- Access is via Omineca mine road.
- Worked intermittently from 1981 to 2020.

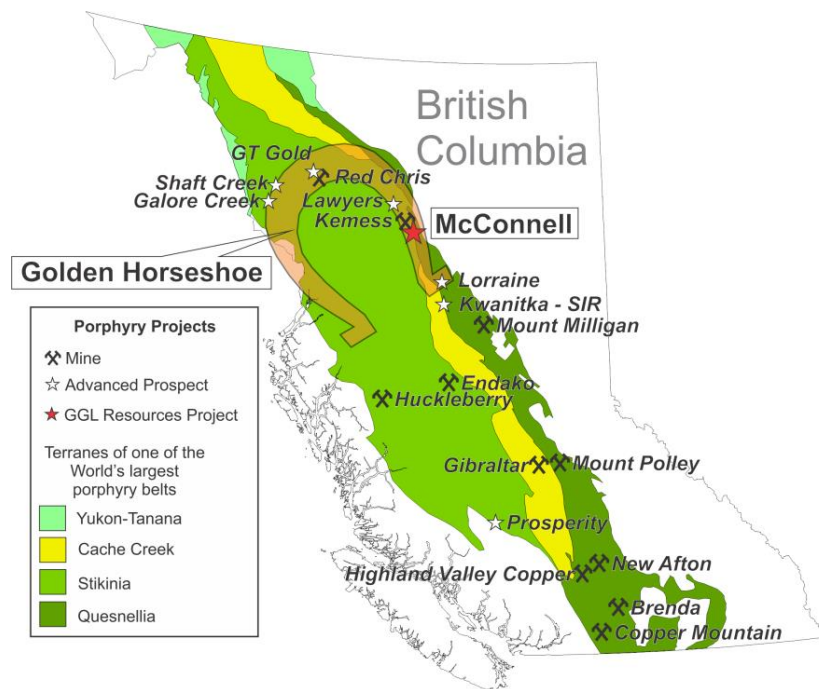




# McConnell Gold-Copper Project



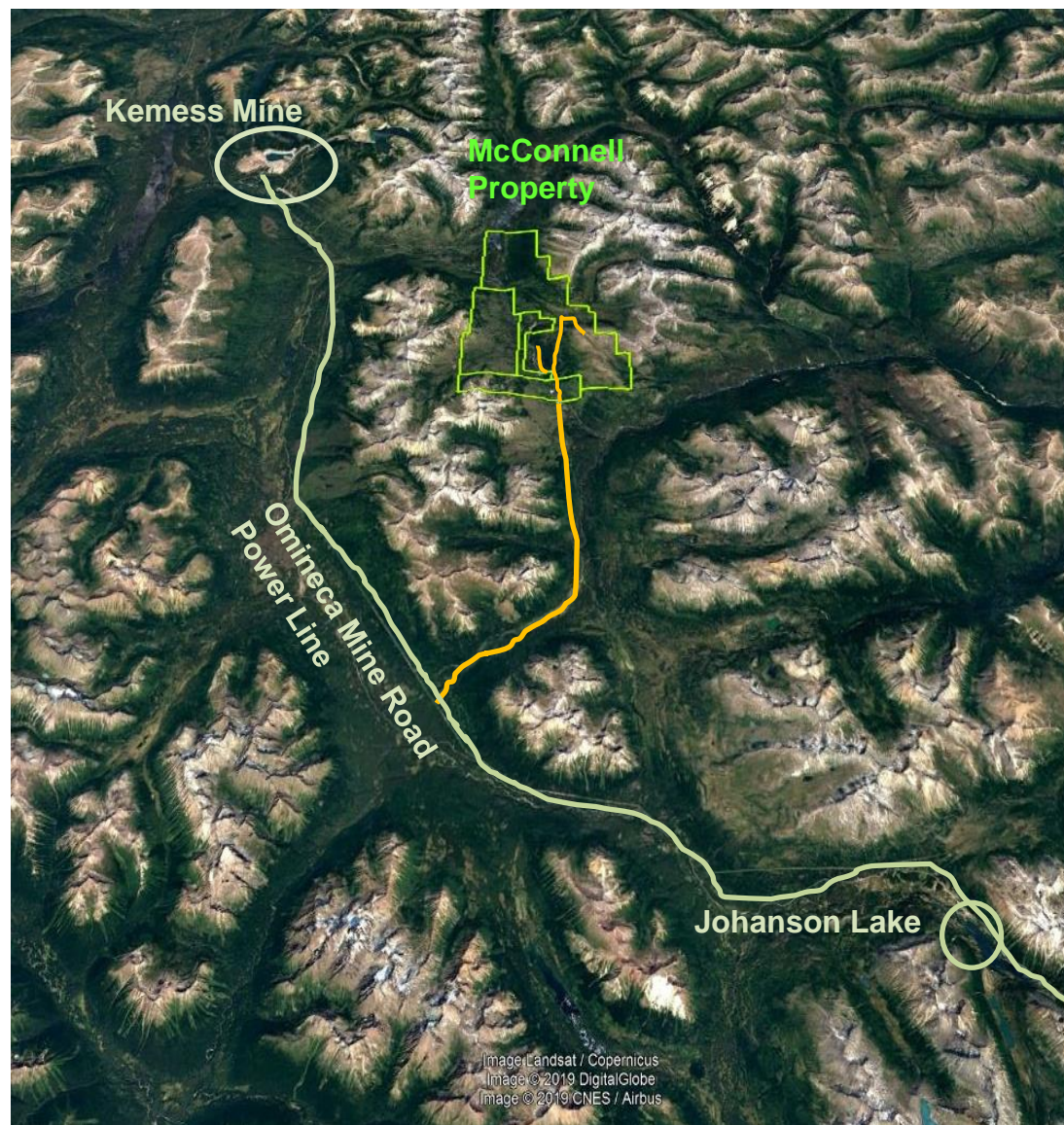
- Copper/Gold porphyry zone.
- Shear-hosted gold veins.
- Located in the Golden Horseshoe, centered 22 km southeast of the past-producing Kemess Copper-Gold Mine.
- On trend with Shasta, Baker and Lawyers past producers.
- Road access and drill permitted.







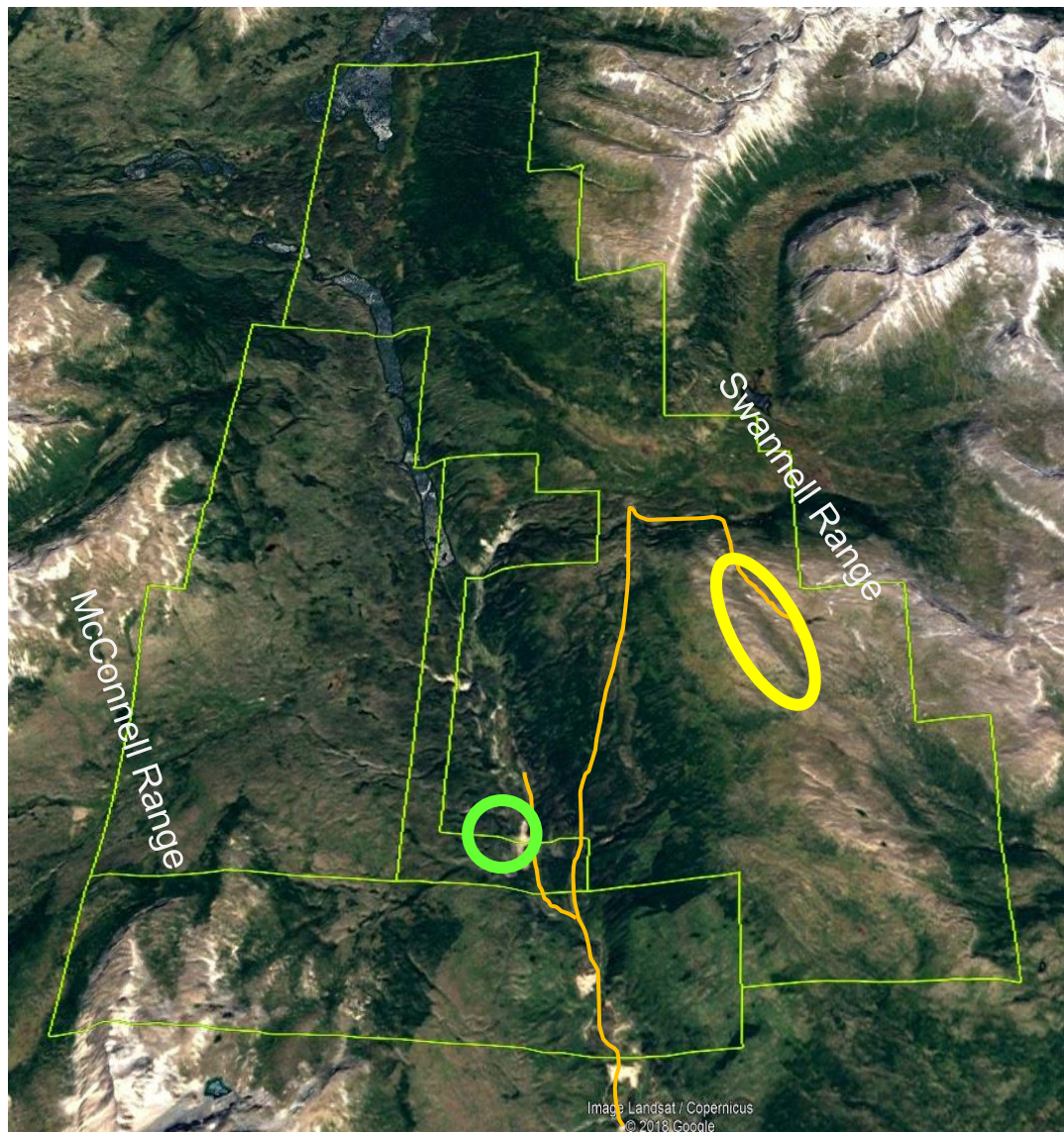
# McConnell Area Infrastructure

- Omineca mine road within the next valley to the west.
- Power transmission line parallels Omineca mine road.
- 25 km access road from Omineca to McConnell.
- Road network on McConnell property to mineralized zones.





- The McConnell property lies between the McConnell Range (west) and Swannell Range (east).
- The Ingenika Fault runs NNW – SSE separating the ranges and contains McConnell Creek which drains south from McConnell Lake.
- The gold zone  lies on an alpine ridge.
- The copper zone  lies on the flank and within the valley.
- Placer workings can be seen in the valley from the copper zone heading south.



# McConnell Historic Work Overview

**+\$ 4,000,000 Work to Date (1981 to 2020)**

## Ground Geophysics

- 1981-89 mag VLF-EM 417 lkm
- 2008 – I.P. survey 20 lkm - gold
- 2020 - I.P. survey 12 lkm - copper

## Drilling

- 1958 – 11 holes
- 1972 – 2 holes (copper zone)
- 1984-89 – 70 holes
- 2008 – 3 holes ( 1 copper zone)

## Sampling

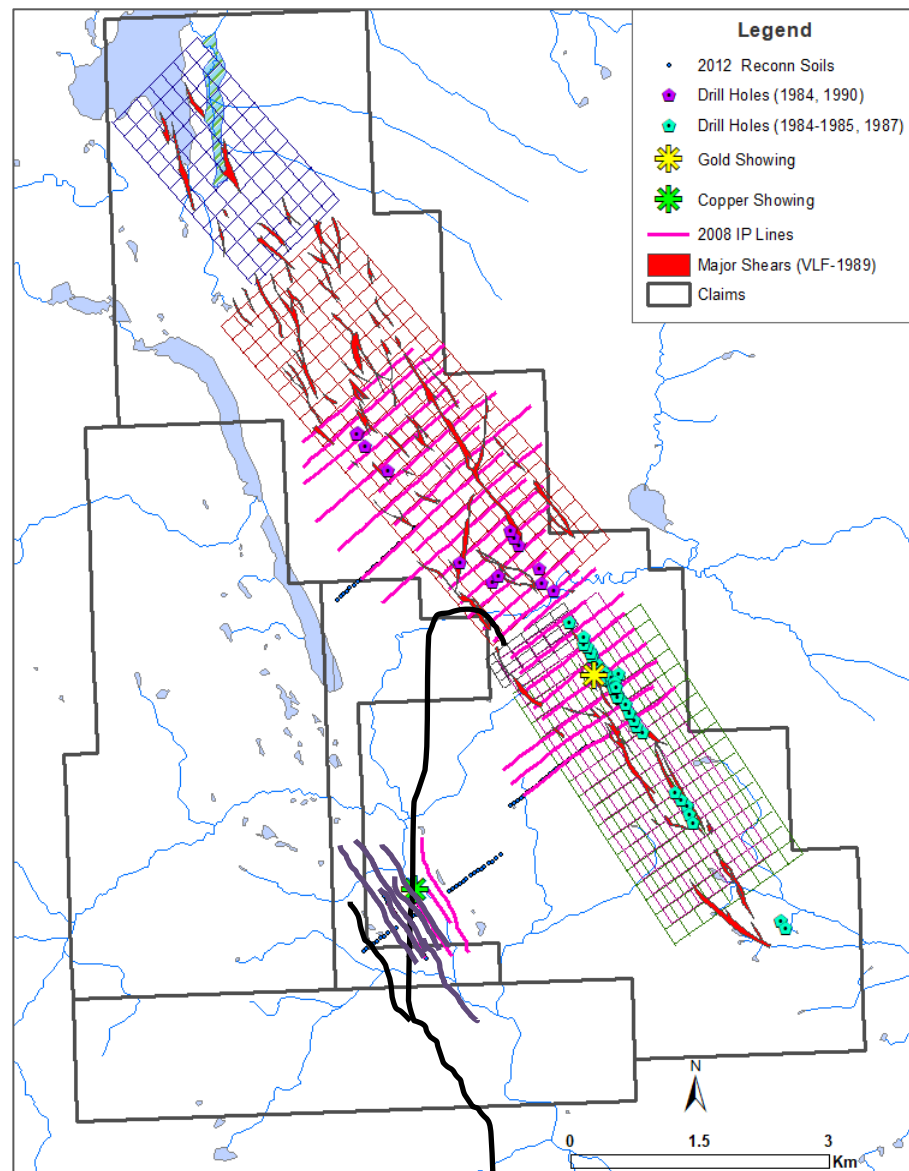
- 1983 to 2018: +7,000 soil samples

## Trenching

- 1989/90: +840 rock samples from trenches

Satellite structural interpretation and data synthesis: 2018

Geology and mapping – limited.





# McConnell Results - Copper

- Copper showing discovered in 1966 and received limited work in 70's pre-GGL.
- Historic trenching (1970's) - **10.97% Cu, 0.136 oz/T Au and 2.12 oz/T Ag over 12 feet.**
- 2008 surface work returned 1 – 20% Cu  
1 – 2 g/t Au over 1 – 7 m.
- 2008 single drill hole returned **5.05m 0.34% Cu, 126 ppb Au** from surface then encountered a fault.



## Trenching and Surface Sampling

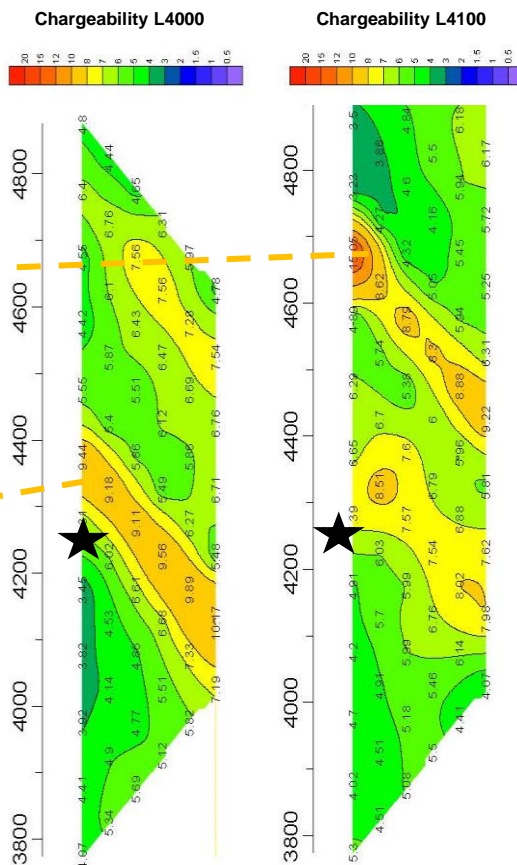
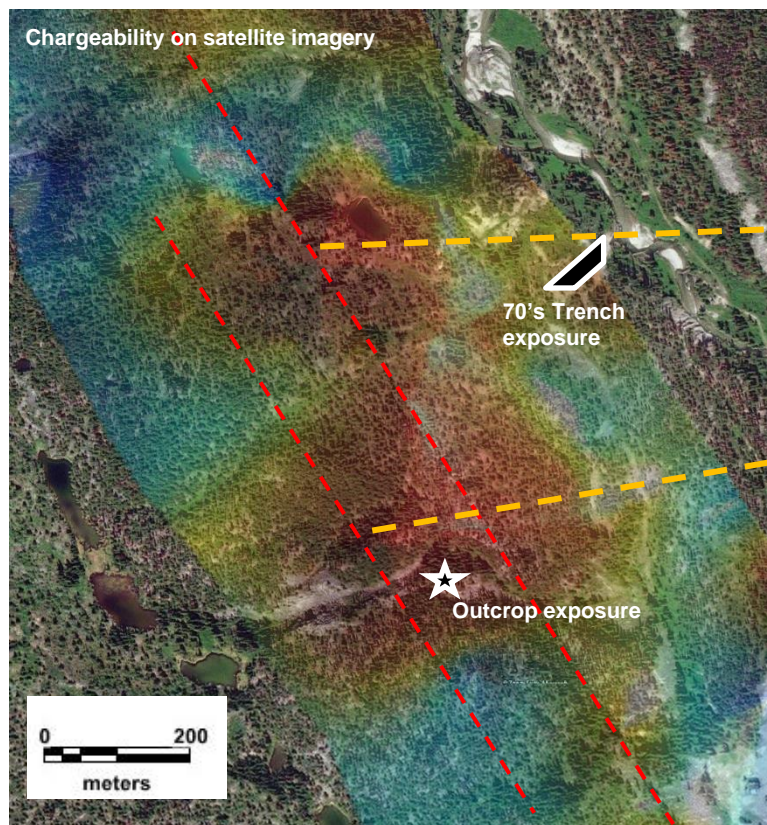
Zone	Year	Width	Cu	Ag	Au
Zone A	1967	20 ft	0.68 %	1.0 opt	
		12 ft	1.95 %	0.2 opt	
	1975	5 ft	2.40 %		
		10 ft	0.94 %		
Zone B	1975	12 ft	10.97 %	2.12 opt	0.13 opt
		15 ft	14.02 %	1.36 opt	0.05 opt
		10 ft	7.60 %	2.90 opt	
		20 ft	2.12 %		
		3 ft	6.60 %	4.6 opt	
Zone C	1991	0.7m	4140 ppm	13 ppm	2277 ppb
Zone D	2008		9.15 %	57 ppm	853 ppb
Zone E	2008		19.28 %	74 ppm	1325 ppb
Snow Slide	2008		4.8 %	37 ppm	695 ppb

- Quartz monzonite.
- Quartz-feldspar porphyry dykes (subvolcanic).
- Veins infilling extension fissures.





# McConnell Results - I.P. Copper



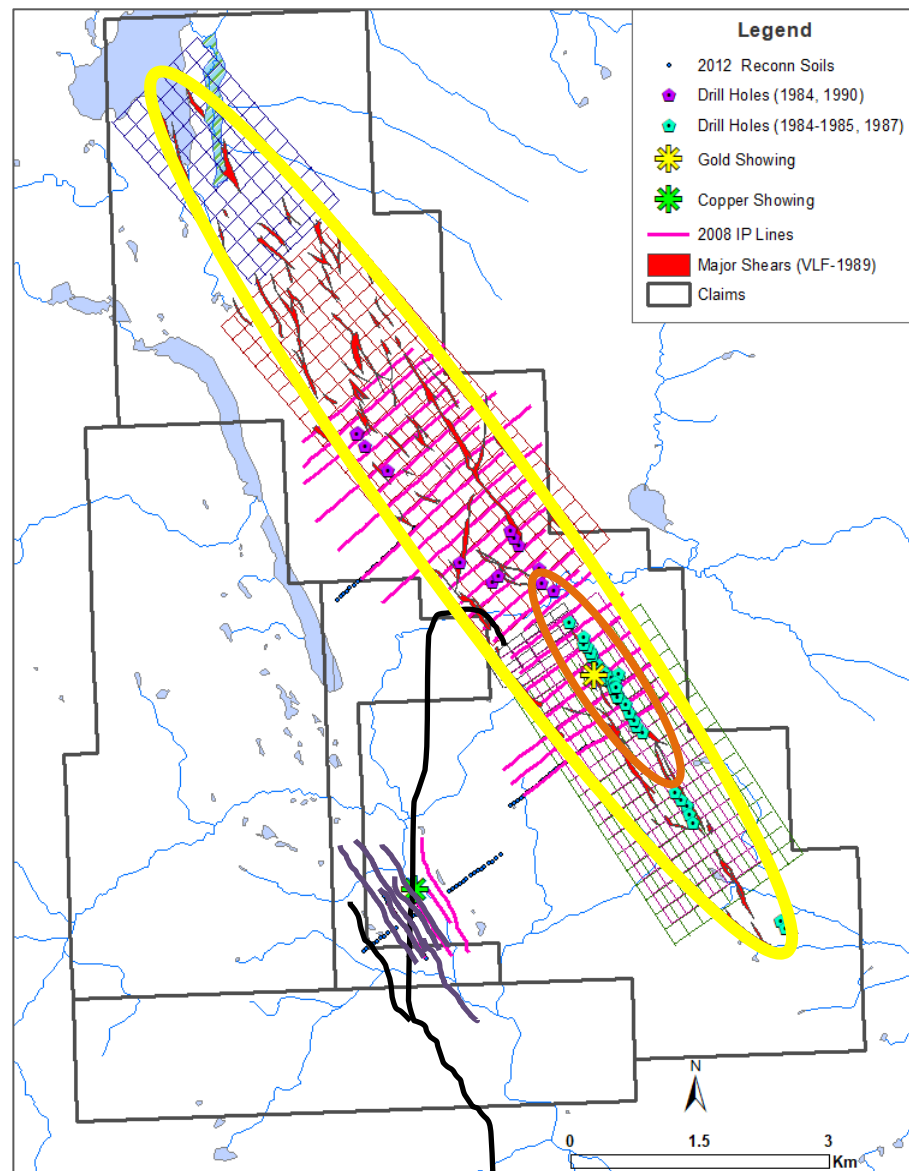
## Copper – Gold Stockwork

- Poorly exposed high-grade mineralization traced over a **600m** then lost under cover.
- I.P. survey conducted in 2020 identified structurally controlled parallel chargeability anomalies. One semi-coincident with surface mineralization and the second unexposed.



## Gold Results Encouraging

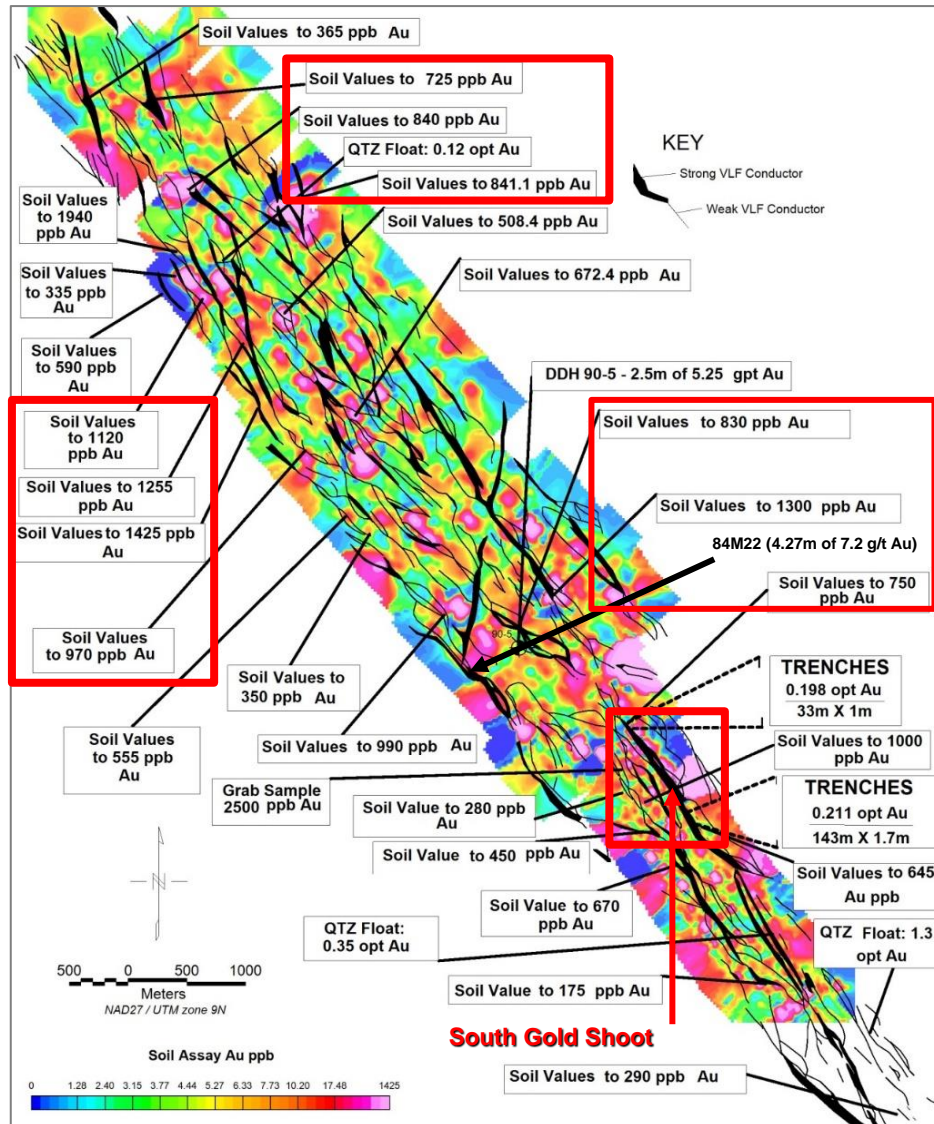
- Majority of the gold exploration was the Company focus 1980's.
- 12 km long ground geophysical VLF-EM signature defining shear hosted gold target.
- Trenching returned 7 – 8 g/t Au over 2 – 5m
- Drilling returned 10 – 15 g/t Au in several 1 meter intervals.
- Most of the drilling and trenching were conducted on the main gold showing hill.
- Significant room for additional evaluation.





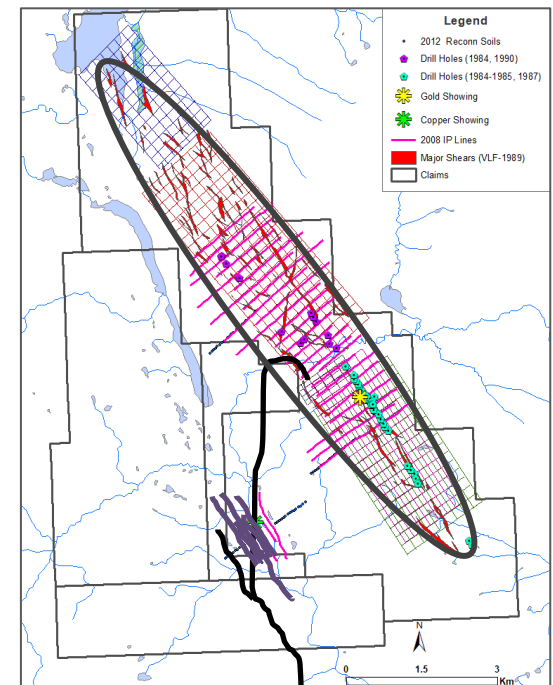


# McConnell Results - Gold Geochem



## Shear-Hosted Gold Zone

- Traced over **12 kilometers** strike.
- Gold in sericite-quartz-carbonate.
- Anomalous gold in soils along shear.
- Gold-in-soil to 2762 ppb Au.

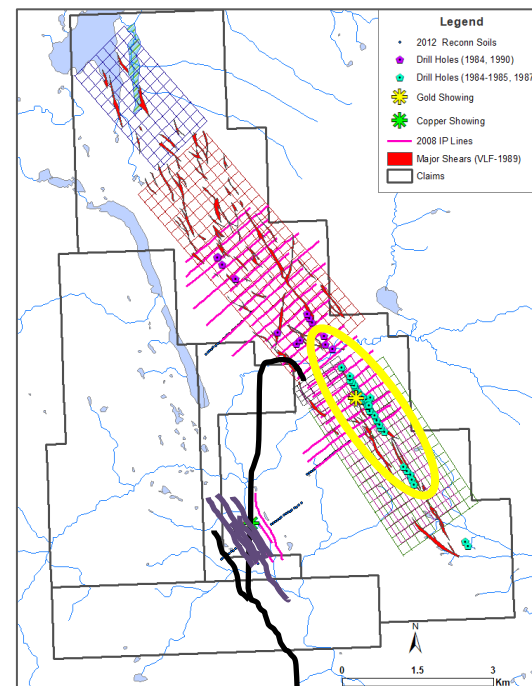




# McConnell Results - Gold Drilling

Year	Sampler or Company	Hole No.	Dip	Intercept (m)	Gold (g/t)	Reference or comment
1958	Centennial Mines Ltd.	2	-21°	1.52	6.86	Ball (1958)
		3A	-40°	2.44	9.60	
		9	-41°	0.52	24.69	
		10	-45°	3.05	7.89	(sludges)
1984	Lornex Mining Corp	84M09	-45°	1.52	5.62	Serack (1984)
		84M22	-65°	4.27	7.20	
		84M22	-65°	4.27	6.24	(check assay)
		84M22	-65°	0.76	3.50	
		84M24	-45°	0.15	6.44	
1985	Lornex Mining Corp	85M07	-45°	3.03	3.70	Serack (1985)
		85M09	-45°	1.20	6.38	
		85M10	-43°	1.10	10.29	
		85M16	-65°	0.45	14.81	
		85M16	-65°	2.55	4.33	
1987	Gerle Gold Ltd	87-02	-45°	1.4	3.84	Smitheringale (1988)
		87-05	-47°	0.7	4.66	
		87-06	-44°	1.0	15.57	
		87-07	-54°	0.8	10.63	
		87-10	-45°	1.0	7.71	
		87-10	-45°	1.0	3.87	
		87-11	-60°	1.0	3.98	
		87-12	-43°	1.0	10.97	
		87-13	-49°	1.0	5.25	
1990	Placer Dome Inc	90-05	-45°	2.25	5.25	Deschenes (1990)

Table Extracted from a NI 43-101 by Richardson (2007)





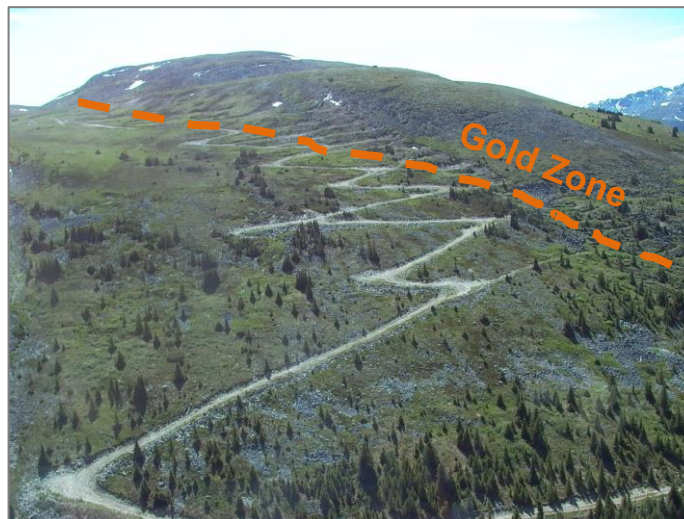


# McConnell Results - Gold Trenching

**TABLE 2 SUMMARY OF SIGNIFICANT TRENCH ASSAYS**

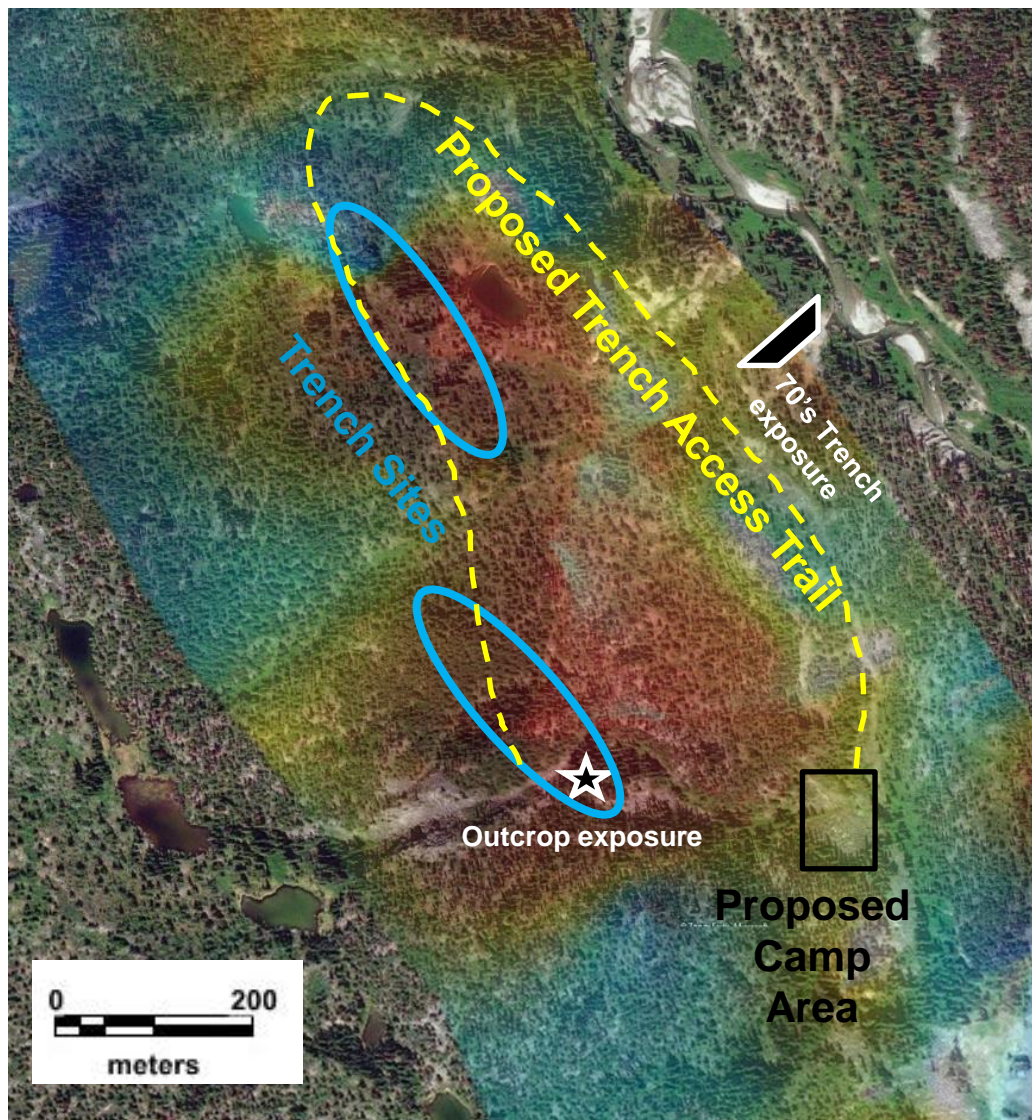
Year	Sampler or Company	Trench Number	Length (m)	Gold (g/t)	Reference
1947	W. H. White (BCDM)	1	1.6	4.46	White (1948)
		5	1.8	22.29	
		5	3.3	42.35	
1958	Centennial Mines Ltd.	17	0.9	3.43	Payne (1975)
		10	5.6	8.23	
		11	11.6	15.77	
		11	7.0	8.91	
		11	2.9	34.29	
1958	Centennial Mines Ltd.	2	0.4	3.43	
		2	0.6	17.83	
		20	4.0	4.46	
		17	0.9	3.43	
		10	7.3	6.51	
		11	1.8	11.31	
		13	0.6	4.11	
		14	0.9	4.11	
1987	P.W Richardson	87-05	2.4	25.10	Richardson (1988)
1987	Gerle Gold Ltd.	87-05	2.0	15.98	Smitheringale (1988)
		87-06	4.8	8.16	
		87-07	1.8	7.68	
		87-08	1.6	2.81	
		87-21	1.3	5.25	
		87-10	0.6	5.90	
		87-11	0.9	4.08	
		87-13	1.9	4.77	
		87-16	1.6	5.76	
		87-18	0.9	11.90	
		87-20	0.9	10.66	
1988	Gerle Gold Ltd.	88-29	2.4	8.34	Smitheringale (1988)
		88-34	1.0	8.02	
		88-36	1.0	9.46	
		88-39	2.0	4.75	
		88-40	6.2	4.75	
		88-41	0.8	8.09	

Table extracted from a NI 43-101 by Richardson (2007)





# McConnell - Copper Next Work Plan



## Copper – Gold Stockwork Zone

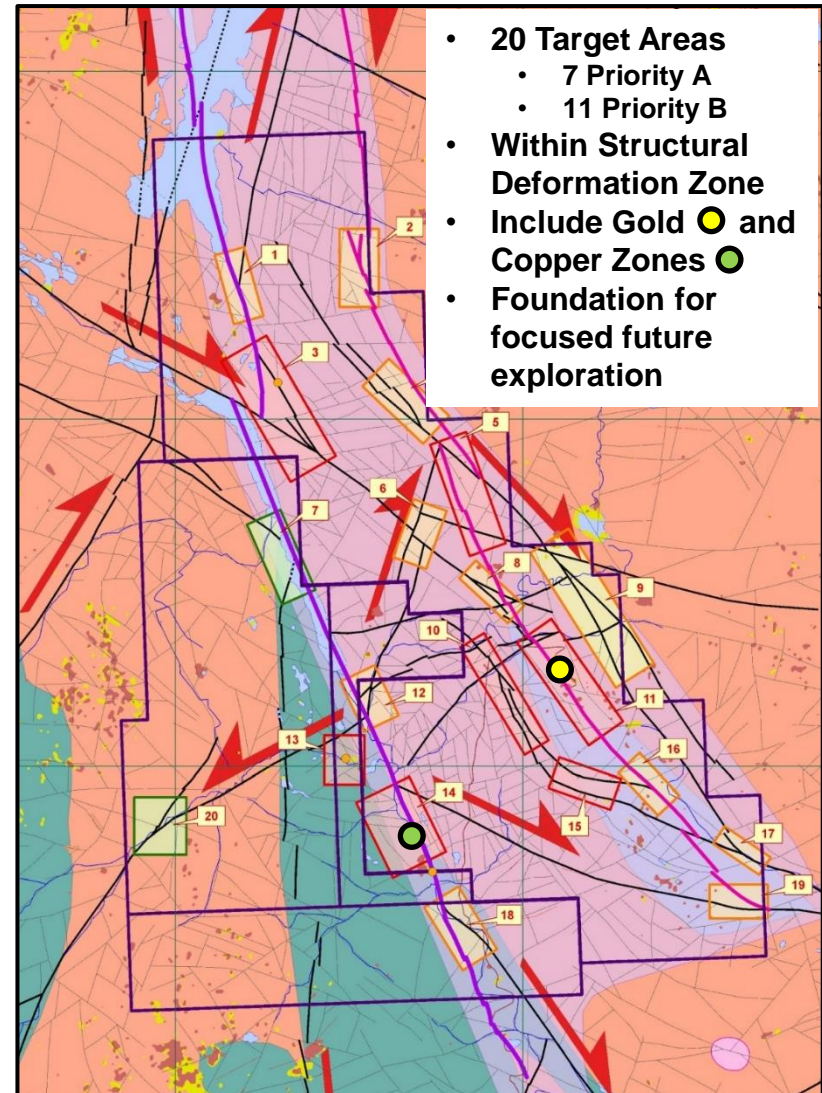
- Trench expose mineralized showing and relate to IP anomaly. **2018 Grab samples up to 20% Cu, 4 g/t Au**
- Trench northern buried IP target.
- Further expose 70's trench exposure **10.97% Cu, 0.136 oz/T Au over 4m.**





# McConnell - Future Areas of Interest

- Satellite remote sensing structural interpretation and data synthesis has confirmed the gold and copper zones as high priorities.
- 5 additional high priority areas have been identified using the same criteria.
- 11 second priority areas have been identified.
- Future areas of investigation are spread along the entire property and are coincident with the major geological faults.





# Contact Information

GGL Resources Corp.  
Suite 510  
1100 Melville Street  
Vancouver, BC  
Canada V6E 4A6

Telephone: (604) 688-0546

Fax: (604) 608-9887

Email: [info@gglresourcescorp.com](mailto:info@gglresourcescorp.com)