

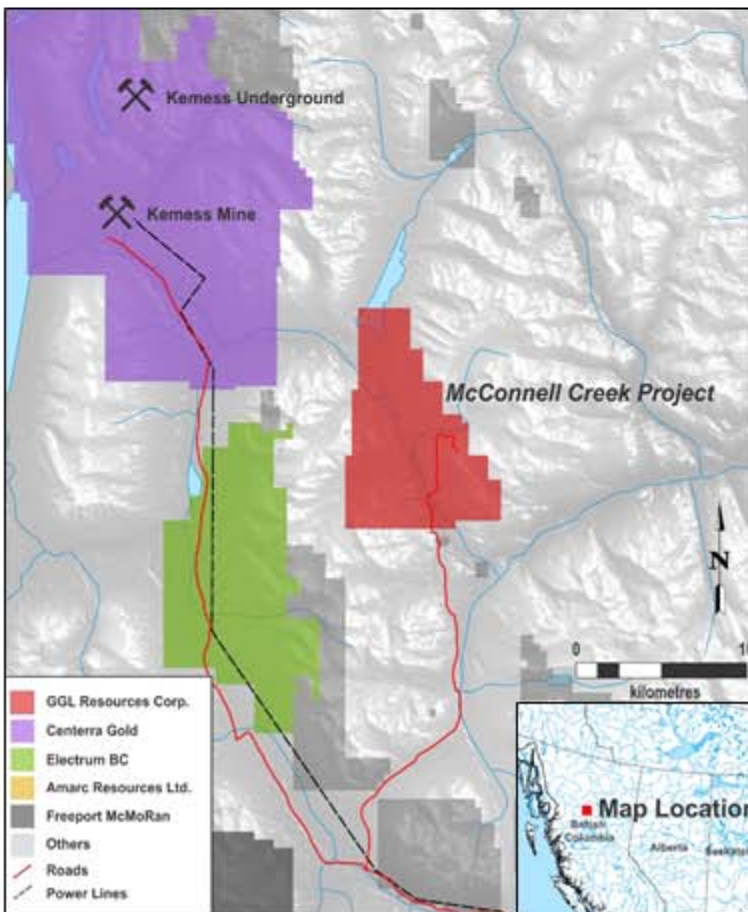


TSX-V: GGL

GGL RESOURCES CORP.

Discovery Through Experience

McConnell Copper - Gold Project



- Copper - Gold Porphyry Zone
- Shear - Hosted Gold Zone
- 100 % owned
- 7,549 hectares
- Road access
- Active exploration and drill permit.
- 22 km southeast of the past producing Kemess Copper-Gold Mine
- Located in BC's Golden Horseshoe region
- Omineca mine and hydro grid power road nearby



Well seasoned management involved in the discovery of the Diavik Diamond Mine as well as several gold and base-metal resources.

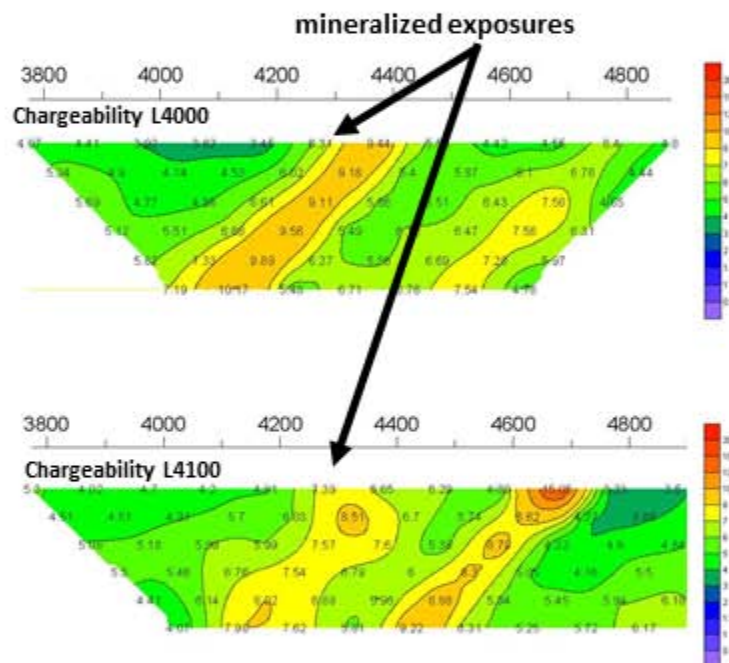
Attractive Capital Structure

| | |
|---------------|------------|
| Shares Issued | 44,946,190 |
| Warrants | 3,623,485 |
| Options | 2,800,000 |
| Fully Diluted | 51,369,675 |

| | |
|----------------------|-----------|
| Share Holders | Ownership |
| Strategic Metals Ltd | 39% |
| Insiders / Advisors | 20% |
| Public Float | 41% |

Copper – Gold Porphyry Zone

- Poorly exposed mineralization over **600m**
- Reconnaissance I.P. shows **untested** buried chargeability target
- Historic trenching (1970's) - **10.97% Cu, 0.136 oz/T Au and 2.12 oz/T Ag over 12 feet**
- Company sampling in 2018 **confirmed** historic results
- Single hole 2008 - **5.05m 0.34% Cu, 126 ppb Au** from surface then encountered a fault
- 2020 IP identified structurally controlled parallel conductors



Shear Hosted Gold Zone

- Traced over **12 kilometers** strike
- Company focus in 1980's
- Drill intercepts up to **1.0m of 15.57 g/t Au**
- Trench samples up to **4.8m of 8.16 g/t Au**
- Additional drilling is warranted